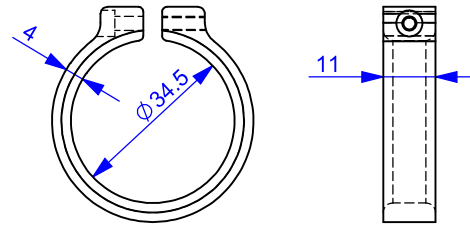
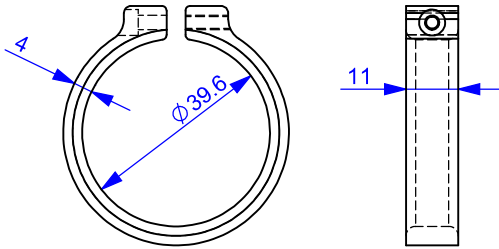


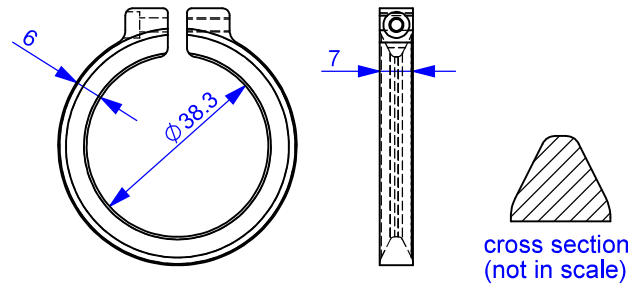
#1301 Clamping ring narrow 39.6 x 7 mm



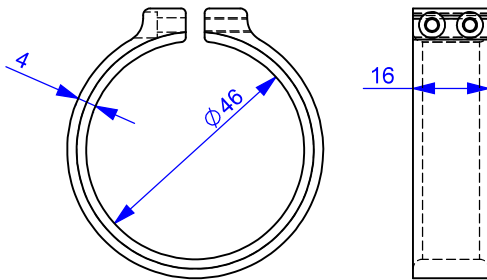
#1810 Clamping ring 34.5 x 11



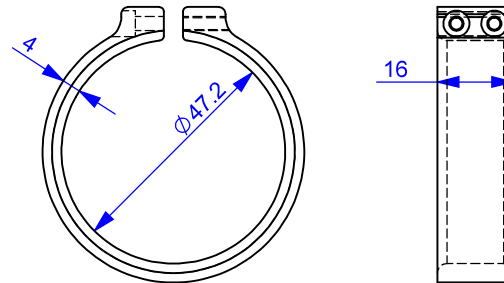
#1300 Clamping ring wide 39.6 x 11 mm



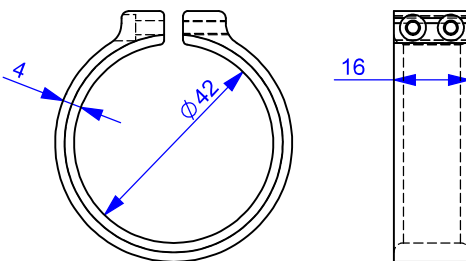
#1760 Clamping ring 38.3 x 7, V-profile



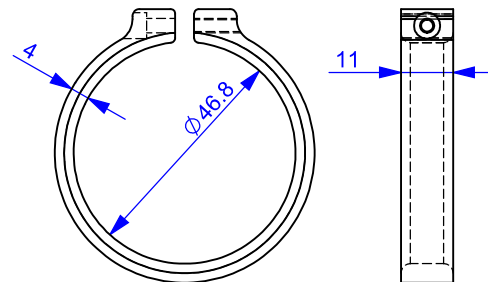
#1807 Clamping ring 47.2 x 16 mm



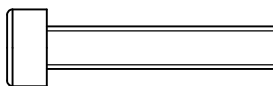
#1757 Clamping ring 47.2 x 16 mm



#1759 Clamping ring 42 x 16 mm



#1758 Clamping ring 46.8 x 11



proper screws: #2209 Screw M3 x 16, socket head, stainless